

Release Notes



SL2100 R3.10.01

Product	-	Univerge SL2100
Version	-	Release 3.10.01
Date	-	26-February-2021
Document Reference	-	FCO 2021.015
Category	-	Feature & Maintenance
Issued by	-	NEC Enterprise Solutions EMEA

Queries concerning this document can be addressed to SMB.TECHSUPPORT@EMEA.NEC.COM

Great care has been taken to ensure that the information contained in this document is accurate and complete. Should any errors or omissions be discovered or should any user wish to make a suggestion for improving this document, they are invited to send the relevant details to supportcentre@emea.nec.com

Disclaimer: Our products are subject to continuous development and improvement. Therefore additions or modifications to the products after mentioned date may cause changes to the technical and functional specifications. No rights can be derived from the contents of this document. NEC Nederland B.V. and/or its respective suppliers make no representations about the suitability of the information contained in this document and related graphics published as part of the services for any purpose. This document and related graphics are provided "as is" without warranty of any kind. NEC Nederland B.V. and/or its respective suppliers hereby disclaim all warranties and conditions with regard to this information, including all warranties and conditions of merchantability, whether express, implied or statutory, fitness for a particular purpose, title and non-infringement. In no event shall NEC Nederland B.V. and/or its respective suppliers be liable for any special, indirect or consequential damages or any damages whatsoever resulting from loss of use, data or profits, whether in an action of contract, negligence or other tortious action, arising out of or in connection with the use or performance of information available from the services. This document and related graphics published on the services could include technical inaccuracies or typographical errors. Changes are periodically added to the information herein. NEC Nederland B.V. and/or its respective suppliers may make improvements and/or changes in the product(s) and/or the program(s) described herein at any time. The example companies, organizations, products, domain names, e-mail addresses, logos, people, places and telephone numbers depicted herein are fictitious. No association with any real company, organization, product, domain name, e-mail address, logo, person, place or telephone number is intended or should be inferred.

All rights reserved. Reproduction in whole or in part is prohibited without the written consent of the copyright owner. This document is provided for information only. NEC Enterprise does not provide any warranties covering this information and specifically disclaims any liability in connection with this document. NEC and the NEC logo are trademarks or registered trademarks of NEC Corporation that may be registered in Japan and other jurisdictions. All trademarks identified with © or TM are registered trademarks or trademarks of their respective owners. Models may vary for each country, and due to continuous improvements this specification is subject to change without notice. Please refer to your local NEC contact(s) for further details.

Contents

1. INTRODUCTION	3
2. IDENTIFICATION.....	3
3. COMPATIBILITY	3
4. UPGRADE INSTRUCTIONS	3
5. FUNCTIONAL CHANGES.....	6
5.1 SP310 released on SL2100.....	7
5.2 SECURITY CHANGES.....	9
5.3 Increased HTTPS connection support for InApps	11
6. SOLVED PROBLEMS.....	12
6.1 List of Solved Problems.....	12
6.2 List of Solved Problems in Previous Releases	13
7. KNOWN PROBLEMS.....	23
8. SECURITY	23
9. MATERIALS	23
Physical Distribution.....	23
On-line Distribution.....	23

1. INTRODUCTION

This FCO provides information about the Maintenance Release of Univerge SL2100 Main Software.

- SL2100 Main Software R3.10.01

It is strongly recommended this FCO be read through to understand the compatibility changes due to security enhancements.

2. IDENTIFICATION

This release is SL2100 Main Software R3.10.01

3. COMPATIBILITY

Any UNIVERGE SL2100 can be upgraded with this system software. Please check compatibility based on security changes explained further in this FCO.

4. UPGRADE INSTRUCTIONS

It is highly recommended to upgrade any new install before visiting the customers premises. For existing installs it is always advisable to save the system configuration prior to any upgrade.

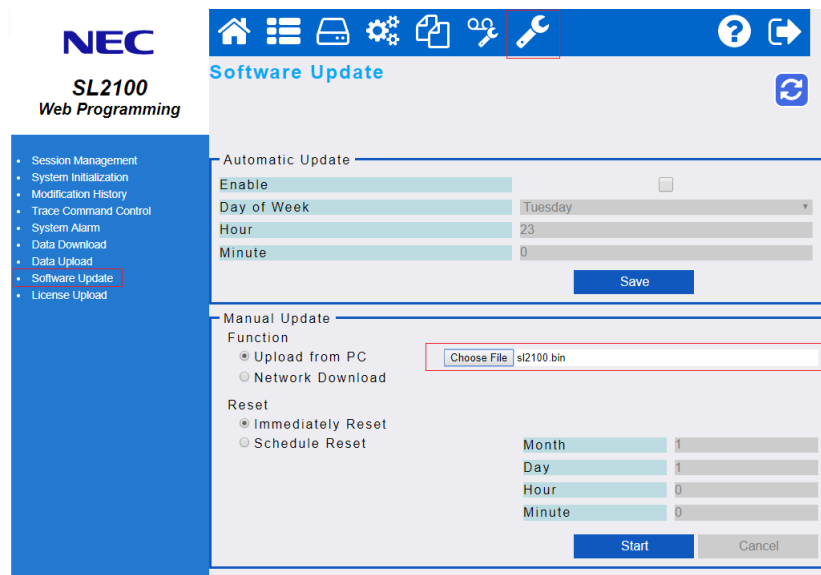
WARNING: Powering off while upgrade is occurring, can cause corruption of the CPU. Please ensure you allow the full upgrade to occur. The upgrade can take between 10 and 15 minutes and it is normal for the LED status to remain constant (no flashing, or continuous flashing with no change) for periods of the upgrade cycle. Please do not power off during this period. To give a better indication of upgrade status, the LED pattern has been changed from version 1.5. Please see section later in this document.

To perform a system software and firmware upgrade via Webpro (This is necessary if upgrading from a version before 1.04.00).

The upgrade file is a .bin file, this may be received as a zip file, if so extract first.

In the Maint. page (Spanner icon), select Software Update.

In the Manual Update area click Choose File and locate the .bin file.



Select either Immediate Reset or Scheduled Reset (enter the required date and time).

Once started the following message can be seen:

Software Uploading is in Progress, Please Wait!!! While Software is uploading, Please do not interact with browser window until the firmware update is completed.

When complete you will see:

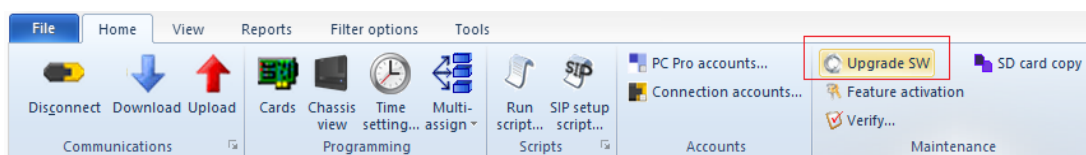
Software Upload completed successfully.
The software will be updated after system reboot.

The SL2100 will now reboot (will reboot later if used the scheduled reboot).

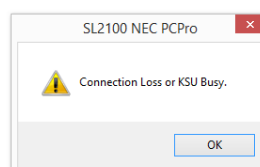
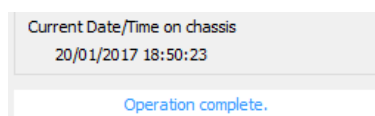
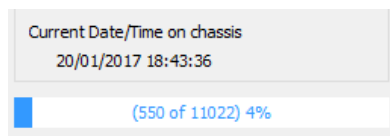
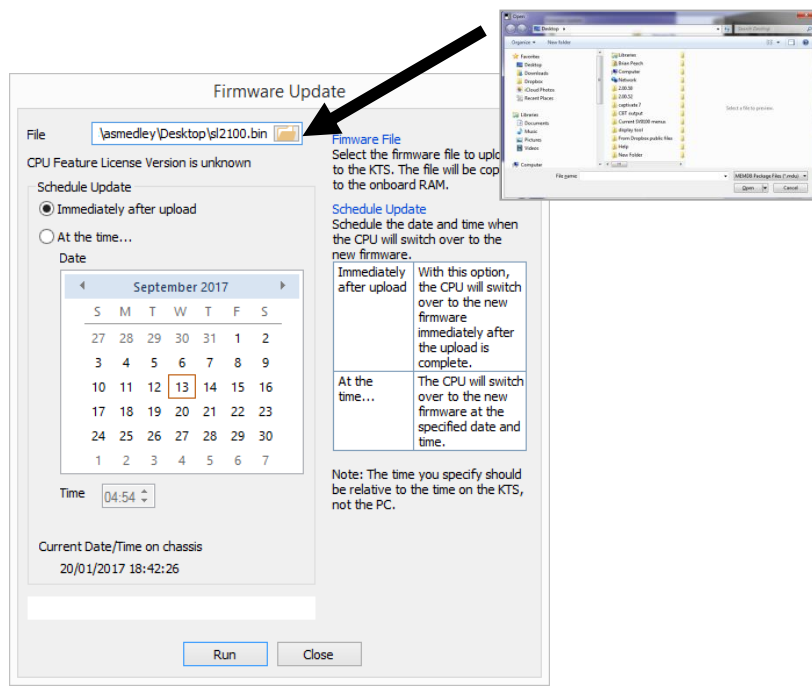
Depending on the changes in the software this may take several minutes (10-15) to come back up, please do not power off during start-up.

Via PcPro:

Connect to the system via PCPro in the normal manner, and from the ribbon bar select Upgrade SW



In the File box, select the bin file you created for the upgrade, then select when the upgrade should occur (immediately or the date specified). At this point the system will perform its normal upgrade cycle and reboot.



Confirms reboot
(Immediately only)

InApps after Main Software upgrade

From version SL2100 1.5 InApp files will remain in place and therefore not require re-installation after SL2100 main software upgrade.

5. FUNCTIONAL CHANGES

This version has the following functional changes.

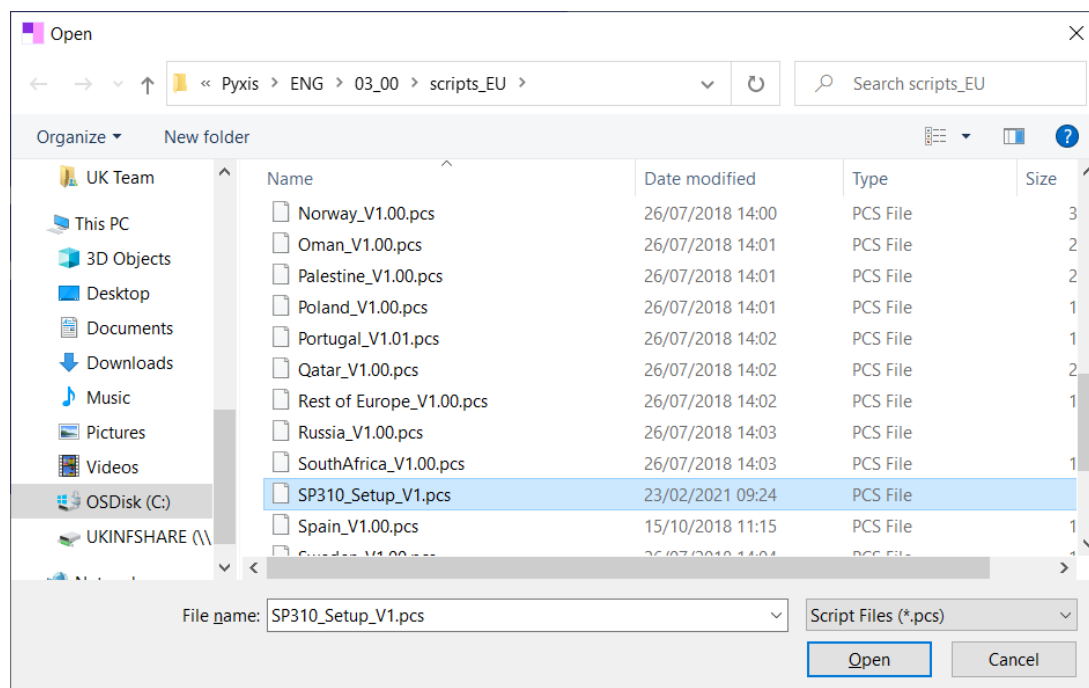
- SP310 released on SL2100
- Security Enhancements
- Increased HTTPS connection support for InApps

5.1 SP310 released on SL2100

The SP310 available on the SV9100 has now been released on the SL2100.

To enable easy programming of this the following items have been made available in PCPro:

- 1) Script – SP310_Setup_V1 to allow correct initial settings for SP310 users.



- 2) SP310 Easy Edit Area:

Search	User Settings	UC-User ID	UC-User Password	UC-DT Client	UC-Softphone Extension	UC-Server Connect	UC-License Level	UC-Login Mode	UC-Attendant Mode	UC-Trial Mode	UC-Voice mail Interface
	001						Deskset	Deskset			
	002						Deskset	Deskset			
	003						Deskset	Deskset			
	004						Deskset	Deskset			
	005						Deskset	Deskset			
	006						Deskset	Deskset			
	007						Deskset	Deskset			
	008						Deskset	Deskset			
	009						Deskset	Deskset			
	010						Deskset	Deskset			
	011						Deskset	Deskset			
	012						Deskset	Deskset			
	013						Deskset	Deskset			
	014						Deskset	Deskset			
	015						Deskset	Deskset			
	016						Deskset	Deskset			
	017						Deskset	Deskset			
	018						Deskset	Deskset			
	019						Deskset	Deskset			
	020						Deskset	Deskset			

3) Licensing :

5111	IP Terminal	0	Off	
5201	Mobile extension	0	Off	
5301	UCS SoftPhone Client	0	Off	
5312	UCS InMail Integration	0	Off	
7100	MCL PBXs	0	On	
7101	MCL Extensions	0	Off	
7103	MCL Concurrent Users	0	Off	

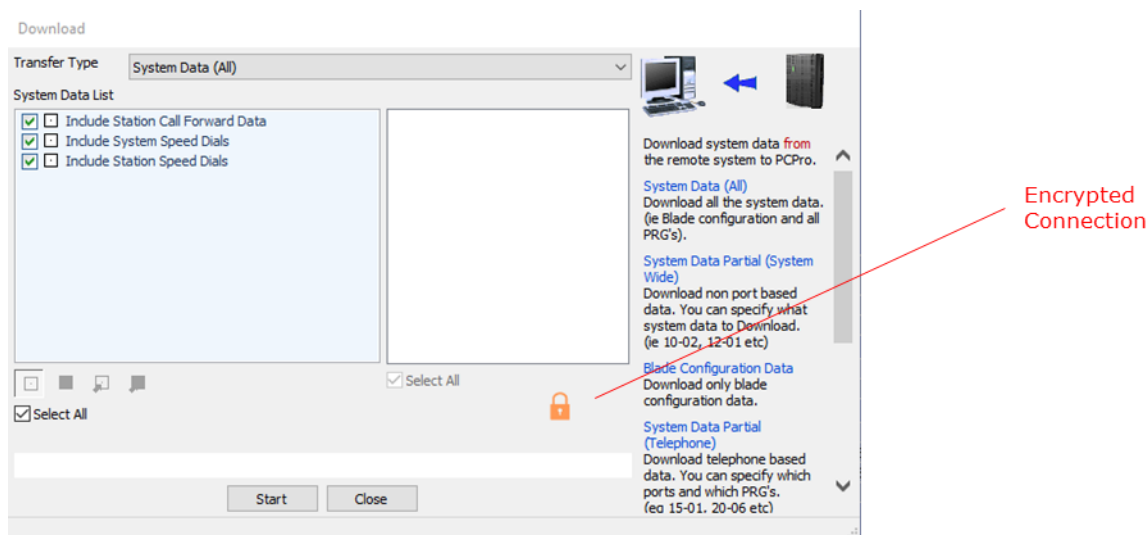
Please refer to SL2100 SP310 documentation for full details on installation.

5.2 SECURITY CHANGES

A number of security enhancements have been made as part of the ongoing improvements on the product.

The key change is the encryption of the config file and PCPor connection.

- 1) PCPro now has an encrypted connection to the SL2100.



It is important to understand the changes in compatibility this causes:

PCPro version	Main Software 3.10.xx with encryption enabled	Main Software pre 3.10.0 xx (encryption not possible)
3.10.02 (Encryption)	Connected (Encrypted)	Connected (No Encryption)
Pre 3.10.02 (No encryption)	Cannot Connect	Connected (No Encryption)

If main Software and PCPro are of encryption supporting levels, they will automatically encrypt, there are no settings to enable/disable.

2) SL2100 has a fully encrypted Database when downloaded.

It is important to understand the changes in compatibility this causes:

	Config File loading to system	
	Main Software 3.10.xx Encrypted	Pre 3.10.01xx Non-encrypted
New PCPro 3.10.02	Yes	Yes *1*2
Non-Encryption PCPro Pre 3.10.02	No *3	Yes

*1 New PCPro can load a non-encrypted PCPro file which a non encrypted PCPro saved.

*2 A Non-encrypted system cannot be loaded with an encrypted PCPro file.

*3 A Non-encrypted PCPro cannot load a PCPro file to new system.

If main Software and PCPro are of encryption supporting levels, they will automatically encrypt, there are no settings to enable/disable.

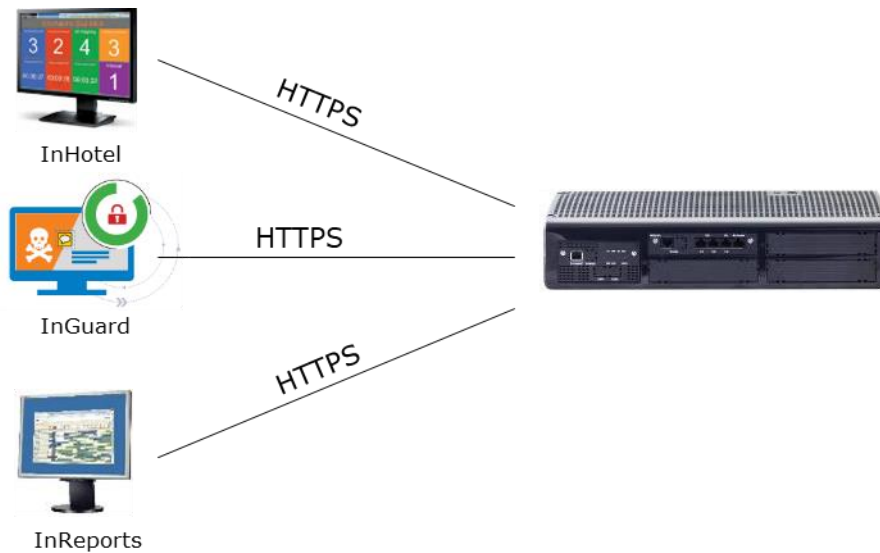
3) OpenSSL upgraded to 1.0.2u.

Improvement in the OpenSSL support. PCPro uses OpenSSL for its encrypted connection.

5.3 Increased HTTPS connection support for InApps

HTTPS connection was recently introduced on the InApps, with a limitation of 10 connections in total.

Version 3.10 has increase this to 64 for the SL2100.



6. SOLVED PROBLEMS

6.1 List of Solved Problems

Reference	Description
F200720002	Lua 5.2 Memory use after free() issue
	Problem has been reported with Lua5.2 (which we use for InApps) and long variable names (over 40 characters). This results in the name not being found.
F201201005	HTTPS not working for InAlert
	Secure connection not possible for the InAlert Application (soon to be released)
F210202002	Facility message fails every other call
	Using call deflection/redirection and it works fine but only 1 out of 2 calls (Prg 14-15).
F210122001	302 return is locking trunks
	The carrier support 302 return, but when it is used on a call forward we see the trunk port lock on the SV9100. This happens until all trunks become busy.
F210107001	Web browser config data security issue
	A web browser security issue was reported. This has been corrected in this version.

6.2 List of Solved Problems in Previous Releases

R3.00.00 Main Software

Reference	Description
F200116001	SL2100 DTMF Transmission as RTP Audio
	if SL2100 sends RFC2833 in Invite SDP and opposite peer dosnt support it, SL2100 deosnt transmit DTMF tones as RTP Audio.
F200507001	External Page volume not correct following reboot
	The value in PRG 31-06-04 is set to 5. After a reboot of the system, the value as a number is still 5. Only thing is that the audio is being transmitted to the external page unit is at value 32.
F200102001	SL2100 unexpected power outages causing command 84-26-01 to reset to default.
	Command 84-26-01 has reset to default following a power outage affecting. Also effects PRG 10-68/14-18

R2.30.06 Main Software

Reference	Description
F190911001	Send 480 Temporary unavailable instead of 487 request terminated when ring no answer exceeds 180 seconds
	Send 480 Temporary unavailable instead of 487 request terminated when ring no answer exceeds 180 seconds. Enable via PCPRO only (to be released wc 21st Sep) PRG 84-39-01
F200824001	InUC Browser Phone disconnecting
	Problems with InUC Browser phone users disconnecting and then have to reconnect to the SL2100.

R2.20.02 Main Software

Reference	Description
F200408001	SDP Version is not incremented
	When SDP properties are changed by SIP carrier SV9100 does not increment SDP version and call is dropped by network provider.

R2.20.00 Main Software

A number of Security fixes have been made plus:

Reference	Description
F190724002	Intermediate Certificate not supported
	SV9100 platform does not support use of intermediate certificates in the chain. Now corrected.

R2.00.09 Main Software

A number of Security fixes have been made plus:

Reference	Description
F191014002	SL2100 sends a MIX of UDP and TCP in registration request
	The SL2100 switches between UDP and TCP for outgoing call invites following the DNS Query. If the Transport layer is UDP the call routes correctly but if TCP is used then the call is rejected. When this happens Incoming and external calls cannot be made. Corrected via use of CMD 84-39-35 set to 1.

R2.00.07 Main Software

A number of Security fixes have been made plus:

Reference	Description
F181031002	Enabling/Disabling 84-33-01 forces SIP Trunk to unbind and re-register.
	When you enable or disable T.38 fax in 84-33-01 for SIP Trunks it forces the SIP Carriers to re-register to the SIP Provider.
F180302001	Toll restriction override problem
	When using Toll Restriction and F-Route, SLT's can be barred on calls they should be allowed to make.
F190613001	SL2100 reset with DT430 number store
	System freezes and resets when a DT430 tries to store called number to an Abb dial.
F190621001	MLT unable to call specific mobile number on ISDN
	If the user makes a call to a mobile with an MLT, the system always sends a setup message with the "Speech" parameter and the call fails with some networks
F191212001	SL2100 Resets when Browser Phone makes or receives call
	On the SL2100 when the browser phone makes or receives a call and the call is connected, the SL2100 will reset.

R2.00.00 Main Software

A number of security fixes have been made in this version. It is strongly recommended to upgrade to this version.

Reference	Description
F171005002 / F171026006	Increase the session ID on re-invite from SIP carrier when the SDP Header is not included.
	SIP Carrier expecting SL2100 to increase the session ID following their re-invite without including the SDP Header but we respond with 200 ok session ID 0, therefore carrier drops the call.
F171005007	SL2100 sends Busy tone when SIP Message 404 not found is sent by the SIP Carrier for outbound call.
	When an outbound call is made to a number that is no longer in service or incorrect the SIP carrier sends 404 not found, the SV9100 then presents Busy tone, This is misleading. Need to send the SIP Out Of Range tone instead of Busy Tone.
F171026012	Missing RTP on peer to peer calls on SIP Trunks
	RTP missing from peer to peer calls on SIP Trunks
F171030005	Setting 90-09 Item 3 resets the system
	The value in 99-09-03 is read in as the hour not the day, and is causing a reset at that hour.
F171106001	84-39-09 is not working as TAG should remain the same in both Invites
	TAG remains the same for both the invite and re-invite if the call is made via an TDM handset but NOT if the call is made from an IP Terminal or IP DECT. The TAG in the re-invite for the outbound call is replaced by the TAG in the invite from the IP Terminal. The call then gets rejected by the SIP Carrier
F171110003	Send authorization information in re-invite message to refresh session expiry for outbound call
	With BT HSIPT SIP Trunk platform outgoing calls from SIP to PSTN disconnect at 450 seconds. This is because the BT Session expiry is set to 900 seconds and they expect us to send a re-invite including authentication either in the first invite or in the seconds invite following the 401 unauthorised.
F171219002	Does not send initial invite message with auth header in case of TCP mode
	SL2100 disconnects SIP Trunk call after auth acknowledgement
F180123003	Problems with ISDN remote access Upload and Download
	At 90% download a messages `connection loss` or `no response from KSU` is seen.
F180202001	CLI on second call to IRG
	When a second call comes into IRG and the members are on the phone the second call CLI is shown replacing the CLI of the 1st caller On the SV9100 cmd 22-01-13 was added to toggle this on and off when cmd 99-03-89 was set. This was missing from the SL2100

Reference	Description
F180215001	Background Noise on IP Terminals
	Background noise (white noise) is heard during internal or external calls on IP Terminals.
F180315002	SL2100 Does not send CANCEL Request when call ended
	If clear a call within 1 Second (immediately on-hook after off-hook) the system does not send a SIP CANCEL. The carrier proceeds the call and it will ring at the target, disregarding that the calling party is already on-hook
F180315003	IP DECT Call History Enhancement
	Problems with redialling numbers held in iSIP IP DECT handsets call history logs. resolved by sending an additional header Info-DirectIn2 that included the CLIP of the incoming number prefixed with the trunk access code from PRG10-02-05 (CID Edit trunk Access Code)
F180320002	No CLI in Outgoing and Incoming Calls on analogue trunks
	No CLI if Reason for absence of Calling Party Name has an unknown parameter included into "Reason for absence of Calling Party Name" field
F180426001	Full number is not shown in redial list
	Only 12 digits max in redial list
F180502003	DT Terminal goes in to Power Save Mode on SL2100
	Issue if a Terminal that is unplugged then is plugged back in goes to Power Save mode although there is no configuration for Power Save set up in the system.
F180702001	SL2100-IP Terminal Echo and Accoustic issue with Analogue Trunk Lines
	Echo when IP Terminal makes call via Analogue Trunk Lines
F180704002	Call Cut Off on SIP Trunks
	Call cut off occurred if T38 Fax relay turned on.
F180710001	Beeping in the headset after answering doorphone calls with the headset lifter DX7NA-WHA-A1
	If you answer a doorphone using the headset, after ending the call, about 1,5 seconds later, the headset seems to lift again.
F180711001	ST500 TLS Outbound Calls (SL2100)
	When making outbound calls from the ST500 client the ST500 Cancels the call after receiving the SDP payload from the PBX to negotiate the setup of the sRTP
F180717001	Wrong Dialling Problem in UAE (SL2100)
	Misdialling occurs on dialling handsfree
F181012001	SL2100 sends `require Timer` as answer to an Invite where `Timer` is not mentioned as supported
	If the SIP carrier sends a re-invite where `Timer` is not mentioned as supported then the SL2100 sends in the 200 OK a Header `Require: Timer` which causes the call to be disconnected by the carrier.

Reference	Description
F181024002	Add extension number to Contact Header for iSIP & SIP Extension
	Requirement is to include the extension number in the contact header from the invite from the SV9100 as below. Currently we send Contact: <sip:172.16.0.10:5070> but the requirement is to have an option to send Contact: <sip:201@172.16.0.10:5070>
F181108001	When enabling NAPT mode for ST500 causes SIP Extension to stop receiving or making calls
	enabling NAPT mode for ST500 (10-33-05) causes Local SIP Extension to stop receiving or making calls - Error SIP out of range.
F181205002	Space added to number in Display Header
	SL2100 sends a space to IP DECT, so CLI matching does not work.
F190225001	System restart occurs if calls are directed to a VRS message
	The call is configured as VRS to a welcome message. If the SL2100 is busy with two calls and a third call comes in and remains without anyone answering, after a minute or so the switch is blocked and reboots.
F190412001	SL2100 InUC Browser phone voice media issue
	After making a call (internal or external) error "Bad Media Description (200)" is shown. Closed Category: After upgrading the software, remove the browser cache memory to reload InUC components

Issue 2: Added F171110003

R1.50.00 Main Software

The following reported problems were solved with this upgrade:

Reference	Description
F171006002	One way speech on SLT when included in step-on ring group and CLI enabled
	When SLT extension has PRG 15-03-09 Caller ID External Module enabled and is in both first and second ring groups, if the call steps to second ring group and is answered by a different extension, the SLT will get one-way speech on all future outgoing (internal and external) calls until a new inbound call is made to the SLT
F171010001	Uploading or recording a message onto the VRS causes distortion when played
	When you upload the attached WAV file to the VRS It has distortion when played. Distortion can also be evident if greetings are recorded with FC 716 or on Voicemail messages left by callers.
F171027006	Use of softkey /navigation keys In any language other than English
	In any language other than English language it is not possible to go through all of the softkey / navigation keys without getting to a point where the user cannot proceed and has to go off hook/back on hook to clear the issue.
F171031001	Missed calls not showing on UT880
	When using v1.1.27, on the SL1x00, if you get a missed call, it doesn't show in the logs page. Inbound and Outbound show correctly. This only appears to be an issue on this version. Fixed with MLC versions 1.3.28 and 1.1.38 and this SL2100 version
F171205003	Missed call fault when set to German Language
	When the system is set to German the missed call log is incorrect. Correction of translation errors.
F171215001	External paging chimes not working
	If dial service code 8031 no chimes are played
F180404002	Busy Lamp for MDG fault
	Extension 201 and 216 are in MDG group Extension 200 has dss console with dss key for extension 201 DDI call to 201 extension 201 and 216 are ringing Caller hangs up the dss key for 201 stays lit
F171030002	TCP/UDP ports for InDECTPro
	Allow InDect to connect to the required ports.
F180207001	System accidentally put into Power Cut mode

Reference	Description
	There is a sleep mode on the SL2100 that kills each slot, except slot 01. If the system goes to sleep (power save) mode, the terminal should wake up with the off hook. This is not happening.
F180214001	PcPro disconnects after a few minutes.
	PcPro disconnects after a few minutes if you connect straight after boot up. If you connect when the system has been booted a while this does not happen.
F180404001	Unable to blind transfer to Mobile Ext from TSP Application
	We have an issue on a site running Mycalls Console, they have noticed that Blind Transfer to a Mobile Extension fails but all other Blind TRF work fine to other devices. When the call is TRF to the Mobile Extension it doesn't ring Mobile Ext and the call disappears in the Mycalls Console but to the Outside Party they still hear ring back tone. When doing a supervised transfer it works, also when they wait approx 1 second and then complete the transfer it works.
F180410001	One way speech on IP terminals when call transfer with Virtual Extn DSS key
	IP terminal has VE for another terminal with 15-02-21 set as DSS and 15-02-07 set as hold. IP terminal is in IRG. 1. IP terminal answers CO call 2. IP terminal presses VE for other extension 3. IP terminal presses transfer 4. other extension answers and clears CO call 5. next CO call answered on IP terminal has no speech

R1.05.03 Main Software

The following internally reported problems were solved with this upgrade:

Reference	Description
F171206001	DIM Command pnum trk 001 Resets System
	Open DIM and type; pnum trk 001 System will restart.
	SL2100 restarts upon receiving inbound "INVITE" / Incoming Calls
	SL2100 restarts when there is inbound call. Outbound call and OPTION message working fine.

R1.04.08 Main Software

The following internally reported problems were solved with this upgrade:

Reference	Description
	Reduced size of bin file
	The bin file has steadily grown through the versions, taking longer to upload to the CPU. The file size has been reduced.

R1.04.07 Main Software

The following externally reported problems were solved with this upgrade:

Reference	Description
F171027002	ISDN remote access to 830 modem not working
	Unable to connect to SL2100 for programming via DDI to 830.

R1.04.00 Main Software

The following externally reported problems were solved with this upgrade:

Reference	Description
A170823003	Echo on Built in VoIP
	Echo could be heard with Analogue Trunks and I extensions.
No ref	Unable to upgrade Via PCpro
	Before 1,04.00 it was necessary to use Webpro to upgrade as PCPro came up with a memory error message
A170803003	Problem Reading License with TcpComPro.dll
	Caused MyCalls to fail reading SL2100 licenses.
A170823004	Lua Ports Blocked by O/S
	A problem has been identified where the ports used by InApps are blocked that prevent InReports and InHotel from running.
A170808005	Application Manager is using an old version
	Application Manager on SL2100 nto in line with version on SV9100

7. KNOWN PROBLEMS

None

8. SECURITY

All ICT installations are at risk of unauthorized intrusion and subsequent misuse. Such intrusions may result in significant losses to the company affected, including but not limited to financial liabilities, data privacy breach, intellectual property, material assets and associated labour or legal costs.

NEC products contain a variety of features designed to help prevent and combat such misuse. To assure their effectiveness it is essential that such features are configured, deployed and maintained in an appropriate manner by the installing party in consultation with the user of the equipment.

The ultimate responsibility for assuring the overall security of the ICT installation resides with the using company. The effectiveness of their security measures depends on the quality and rigorousness of implementation of their security policy by ICT administrators and their user community.

Information about the security features in NEC products and how to configure them is contained within the product documentation.

Please refer to previous section for details on security changes.

9. MATERIALS

Physical Distribution

N/A

On-line Distribution

Any software related to this release can be downloaded from the software database on BusinessNet.
<http://businessnet.nec-enterprise.com>.